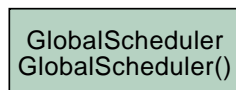
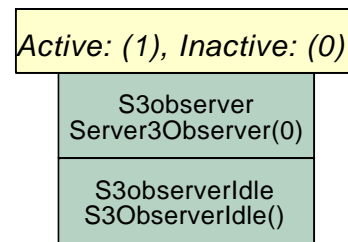
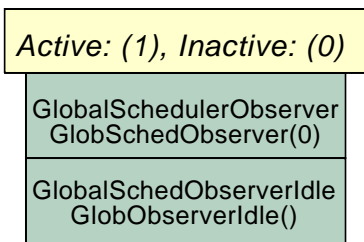


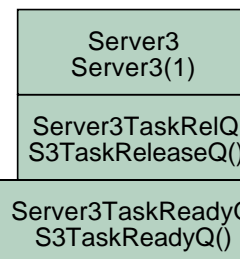
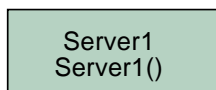
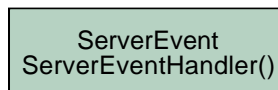
MODEL OF TWO-TIER HIERARCHICAL FIXED-PRIORITY PREEMPTIVE SCHEDULING

2011-01-02

Mikael Asberg (*mikael.asberg@mdh.se*)

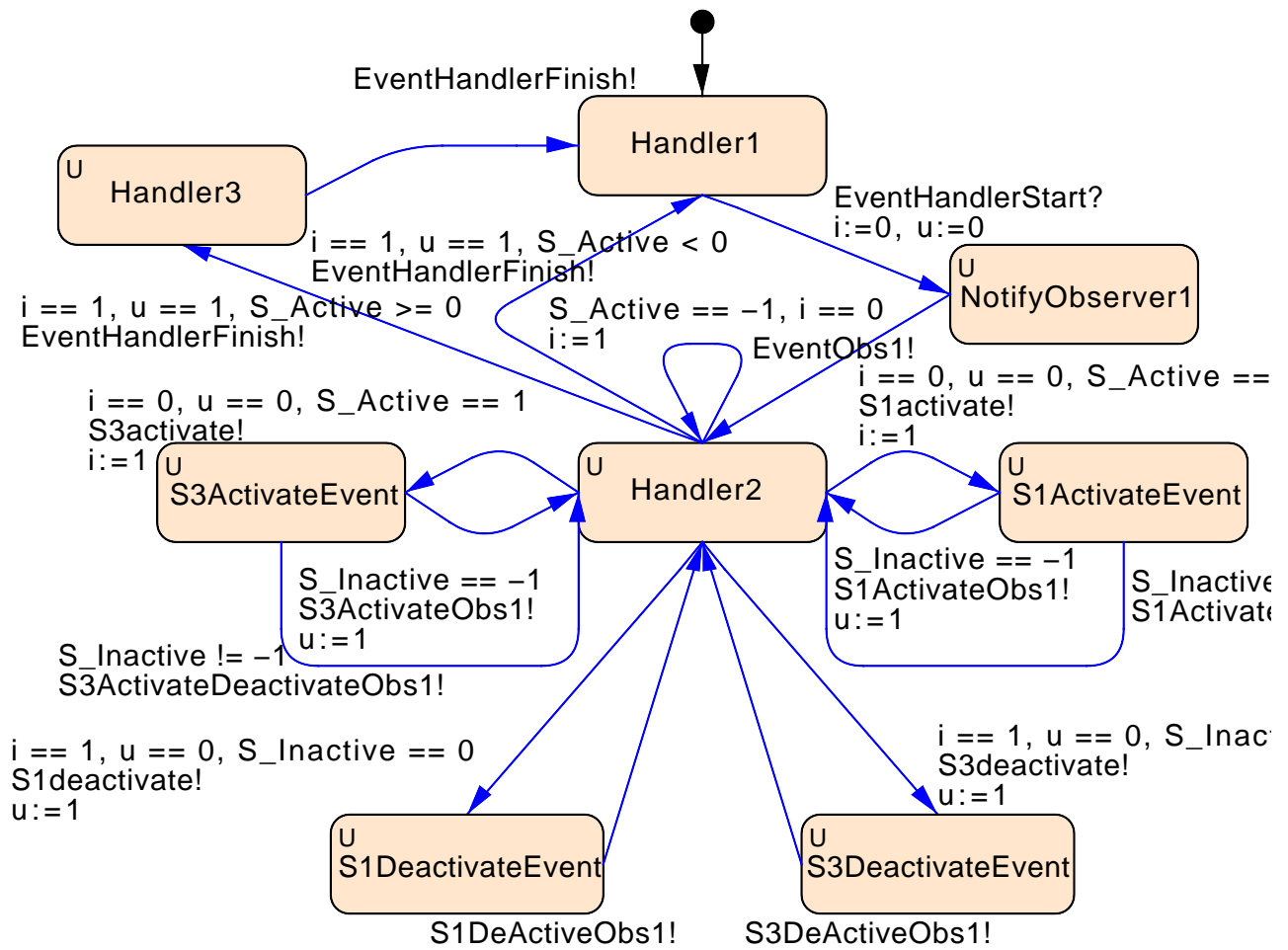


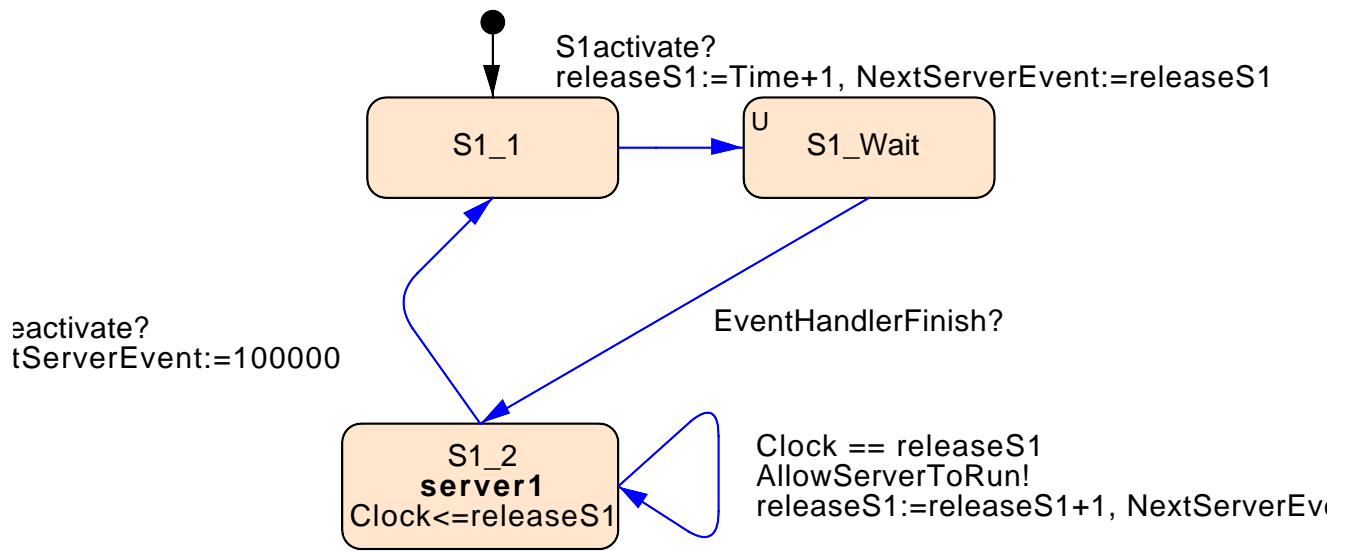
The EventHandler maps a global scheduler event to a 'chan' synchronization in a Server.



Simulated: (1), Non-simulated: (0)









k <= S3\_ReleaseQ[m+1], i == -1

1], k <= S3\_ReleaseQ[m], i == -1

: > S3\_ReleaseQ[m+1], i == -1

: < S3\_ReleaseQ[m-1], i == -1

\_ReleaseQIndex[i]:=index, j:=10000

eleaseQ[j+1], S3\_ReleaseQIndex[j]:=S3\_ReleaseQIndex[j+1], j:=j+1

index[0], m:=S3\_NrOfTasks/2, c:=S3\_NrOfTasks/2, k:=S3\_ReleaseQ[0]+S3\_Period[index], i

